

## At a glance

We enable our customers to run their businesses efficiently and effectively by offering innovative Milling, EDM, Laser, Additive Manufacturing, Spindle, Tooling and Automation solutions. A comprehensive package of Customer Services completes our proposition.

[www.gfms.com](http://www.gfms.com)



AgieCharmilles

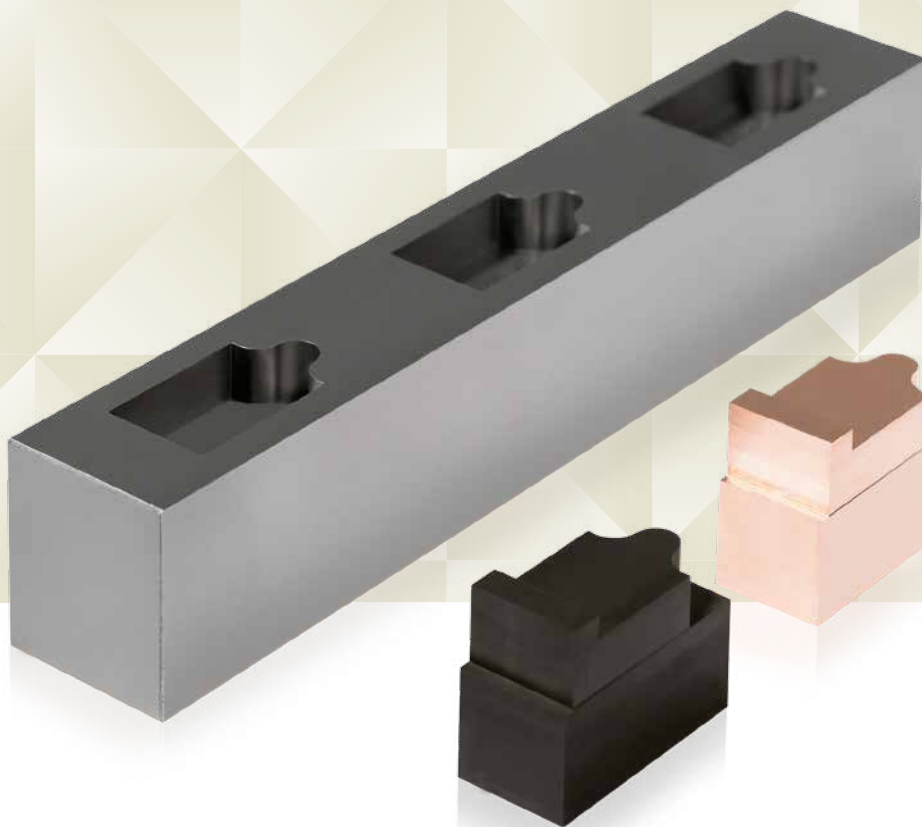
# FORM E 350

# FORM E 600



FORM E 350 / E 600

# Multifaceted performer for molds and parts



## Be ready to tackle any challenge

Increase your business opportunities with versatile solutions from GF Machining Solutions. The FORM E range can machine many materials from steel to carbide, and open new doors for you with its wide variety of technologies.

## More capability per square meter

Take your productivity to the next level of efficiency with this solution offering a static and dynamic, rigid mechanical structure. With this compact solution, GF Machining Solutions ensures that you get the most favorable floor space to work surface area ratio.

## The ultimate in ergonomics, accessibility

Optimal machining strategies are at your fingertip with our AC FORM HMI offering clear choices for each application. The operator introduces—on a single screen—machining parameters such as surface state, depth, machining cycle, and type of application to extract the best generator performance.

## Performant generator to drive your success

Every pulse is optimized to reduce your electrode wear. That's because this solution and our portfolio of die-sinking machines have in common the latest-generation GF Machining Solutions Intelligent Speed Power Generator (ISPG).

# Experience best value for your investment

**+ Your two-in-one solution**

Easily switch between die sinking and hole drilling while maintaining performance, accuracy and quality.

**+ Automatic dielectric**

Increase your machining time while reducing human intervention.

**+ Better accessibility**

Reduce cycle time normally spent accessing the work area to drain the tray.

**+ Higher productivity**

Optimize your production through the integrated rotary tool changer, linear tool changer, or by adding an entry-level System 3R robot.



## Technical data

		FORM E 350	FORM E 600
Travel X, Y, Z	mm (in)	350 x 250 x 250 (13.78 x 9.85 x 9.85)	600 x 400 x 400 (23.63 x 15.75 x 15.75)
Max. workpiece dimensions *	mm (in)	800 x 500 x 265 (31.50 x 19.69 x 10.44)	1000 x 700 x 400 (39.37 x 27.56 x 15.75)
Max. workpiece weight	kg (lbs)	200 (400)	1000 (2204)
Max. electrode weight **	kg (lbs)	50 (110)	100 (220)
Min./Max. distance between table and chuck	mm (in)	230/480 (9.06/18.90)	250/650 (9.85/25.60)
Work table size ***	mm (in)	630 x 400 (24.81 x 15.75)	800 x 600 (31.50 x 23.63)
Min. surface roughness steel (Ra)	µm (µin)	0.1 (4)	0.1 (4)
Rotary Tool Changer		16 positions	26 positions
Generator	A	80	140

\* Width x depth x height \*\* Without automatic chuck \*\*\* Width x depth